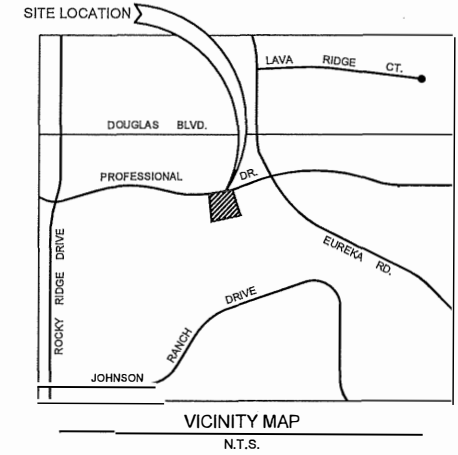
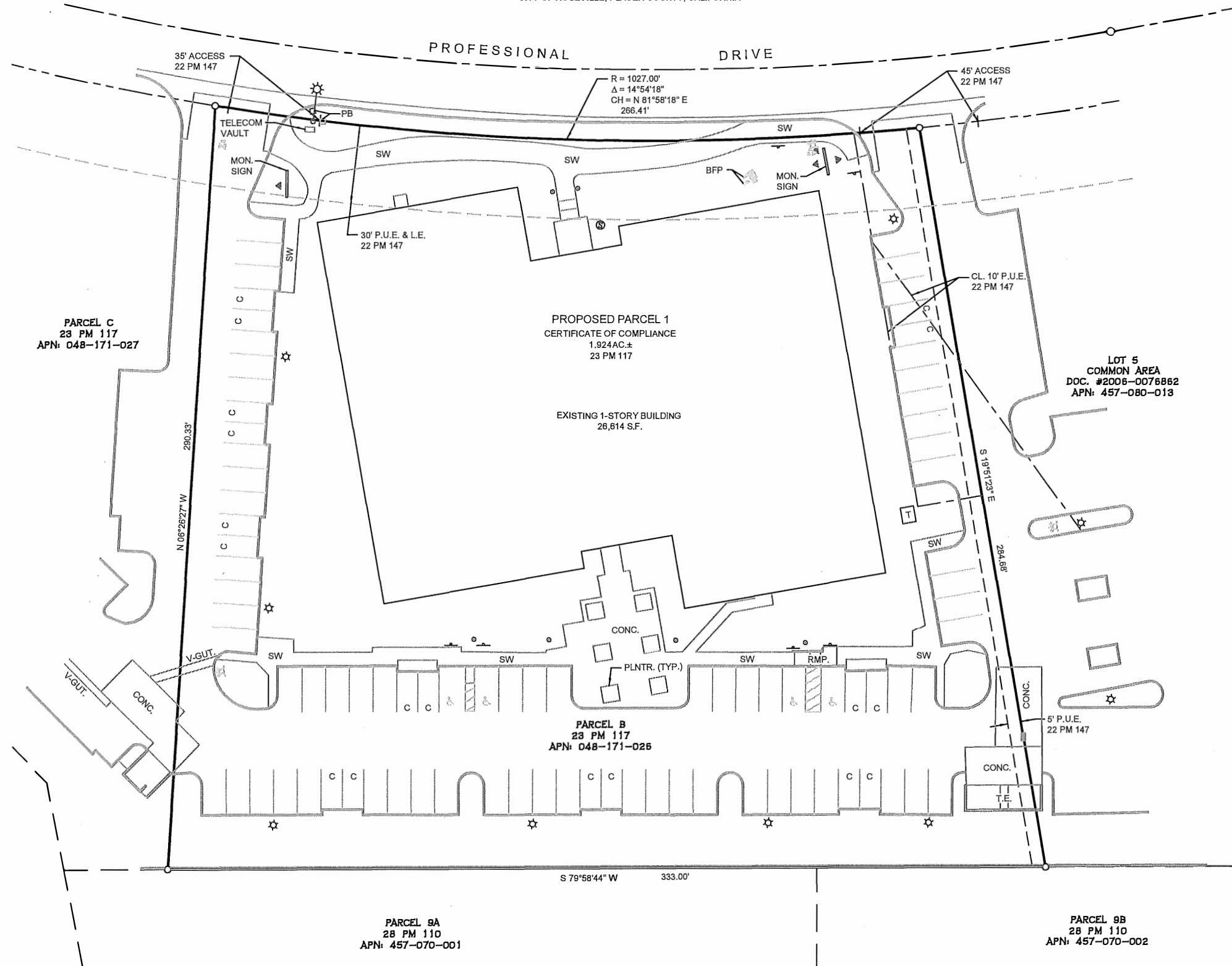


**LAWLER PROFESSIONAL CENTER
TENTATIVE CONDOMINIUM MAP**

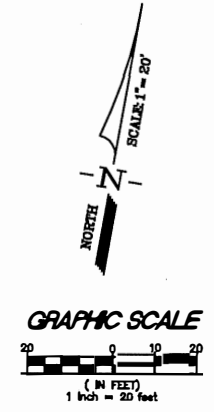
A.P.N.: 048-171-026, PARCEL B OF 23 PM 117
2140 PROFESSIONAL DRIVE
CITY OF ROSEVILLE, PLACER COUNTY, CALIFORNIA



OWNER: RBK PROFESSIONAL, LLC
6520 LONETREE BLVD., SUITE 2003
ROSEVILLE, CA 95765
(916) 789-3338

ENGINEER: SURVEYORS GROUP INC.
9001 FOOTHILLS BLVD., SUITE 170
ROSEVILLE, CA 95747
(916) 789-0822

ELECTRICITY: CITY OF ROSEVILLE.
FIRE PROTECTION: ROSEVILLE CITY FIRE DEPARTMENT
SEWER: CITY OF ROSEVILLE
SCHOOL DISTRICT: EUREKA UNION SCHOOL DISTRICT & ROSEVILLE JOINT UNION HIGH SCHOOL DISTRICT
WATER: CITY OF ROSEVILLE
TELEPHONE: CONSOLIDATED COMMUNICATIONS
LAND USE DESIGNATION / ZONING: BP/SA-SE - BUSINESS PROFESSIONAL - SPECIAL AREA
ASSESSOR PARCEL NUMBER(S): 048-171-026
PROPERTY ADDRESS: 2140 PROFESSIONAL DRIVE
LAND AREA: PARCEL B = 1.924 ACRES±
CONDOMINIUM PLAN:
CERTIFICATE OF COMPLIANCE: 14 OFFICE UNITS



SURVEYED	G. TAYLOR
DRAWN	T. BLAIR
CHECKED	T. BLAIR
DATE	10-2-24
SCALE	1" = 20'

REV. NO.	REVISION DESCRIPTION	DATE	BY

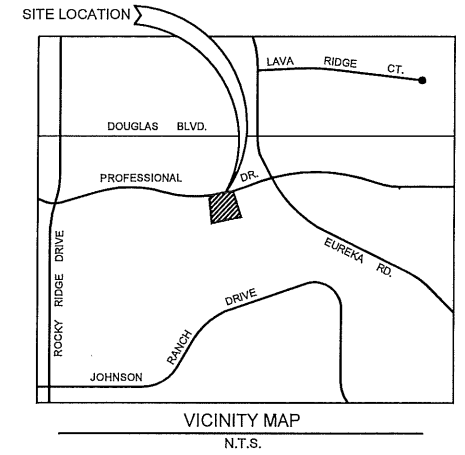
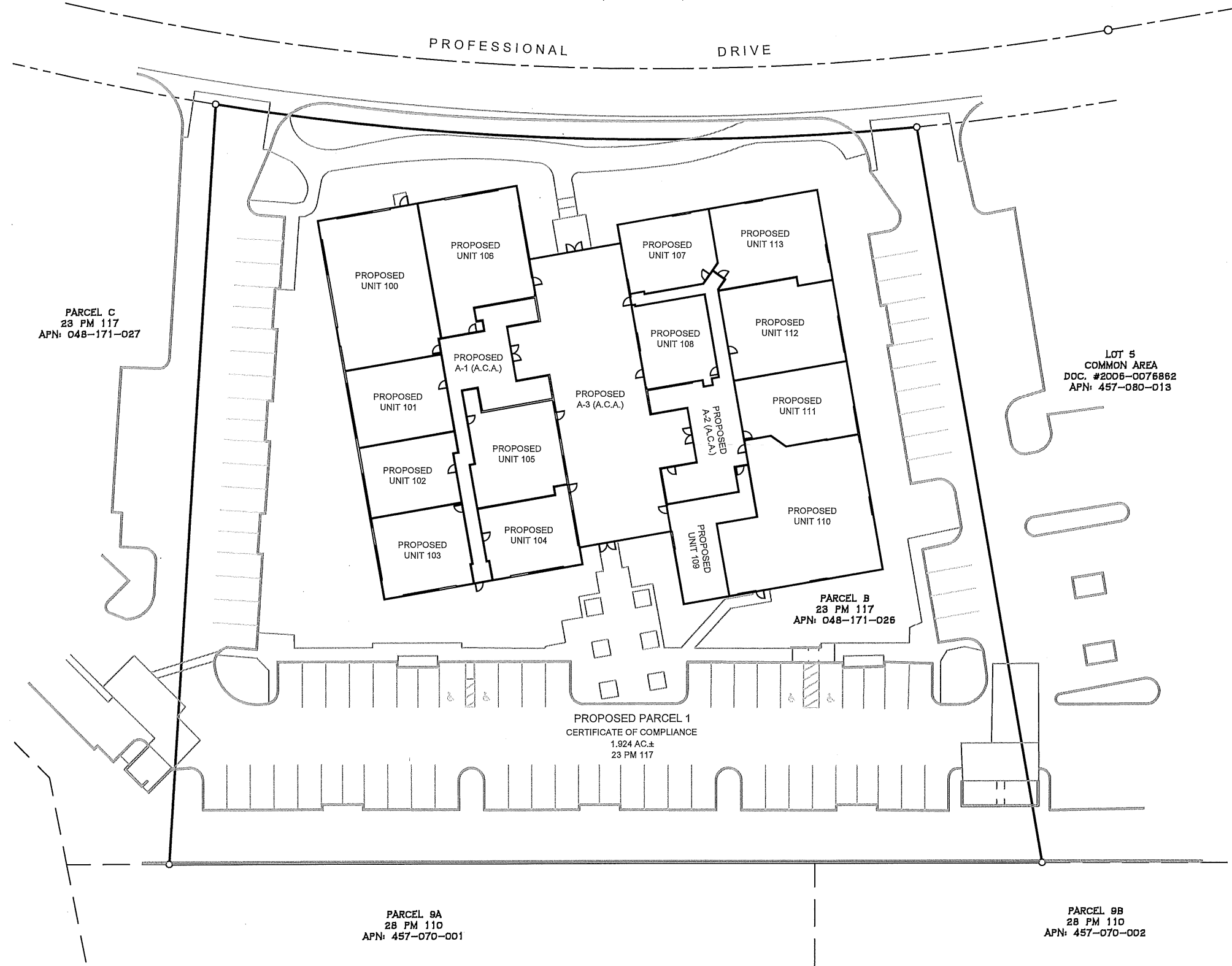
TITLE
TENTATIVE CONDOMINIUM MAP
A.P.N.: 048-171-026, PARCEL B OF 23 PM 117
2140 PROFESSIONAL DRIVE
CITY OF ROSEVILLE, PLACER COUNTY, CALIFORNIA

SGI COMPANIES
SGI CIVIL & SURVEYORS GROUP, INC.
9001 FOOTHILLS BLVD., SUITE 170
ROSEVILLE, CA 95747
(916) 789-0822 (916) 789-0824 (Fax)
www.sgicompanies.com

LAWLER PROFESSIONAL CENTER

SITE PLAN - CONDOMINIUM MAP

A.P.N.: 048-171-026, PARCEL B OF 23 PM 117
 2140 PROFESSIONAL DRIVE
 CITY OF ROSEVILLE, PLACER COUNTY, CALIFORNIA



OWNER: RBK PROFESSIONAL, LLC
 6520 LONETREE BLVD., SUITE 2003
 ROSEVILLE, CA 95765
 (916) 789-3338

ENGINEER: SURVEYORS GROUP INC.
 9001 FOOTHILLS BLVD., SUITE 170
 ROSEVILLE, CA 95747
 (916) 789-0822

ELECTRICITY: CITY OF ROSEVILLE.

FIRE PROTECTION: ROSEVILLE CITY FIRE DEPARTMENT

SEWER: CITY OF ROSEVILLE

SCHOOL DISTRICT: EUREKA UNION SCHOOL DISTRICT & ROSEVILLE JOINT UNION HIGH SCHOOL DISTRICT

WATER: CITY OF ROSEVILLE

TELEPHONE: CONSOLIDATED COMMUNICATIONS

LAND USE DESIGNATION / ZONING: BP/SA-SE - BUSINESS PROFESSIONAL - SPECIAL AREA

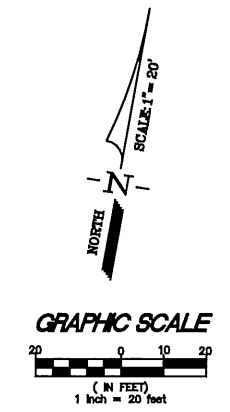
ASSESSOR PARCEL NUMBER(S): 048-171-026

PROPERTY ADDRESS: 2140 PROFESSIONAL DRIVE

LAND AREA: PARCEL B = 1.924 ACRES±

CONDOMINIUM PLAN:

CERTIFICATE OF COMPLIANCE: 14 OFFICE UNITS



SURVEYED	G. TAYLOR
DRAWN	T. BLAIR
CHECKED	T. BLAIR
DATE	10-2-24
SCALE	1" = 20'

REV NO	REVISION DESCRIPTION	DATE	BY

TITLE
TENTATIVE CONDOMINIUM MAP
 A.P.N.: 048-171-026, PARCEL B OF 23 PM 117
 2140 PROFESSIONAL DRIVE
 CITY OF ROSEVILLE, PLACER COUNTY,
 CALIFORNIA

SGI COMPANIES
 SGI CIVIL • SGI 3D • SURVEYORS GROUP, INC.
 9001 Foothills Blvd., Suite 170
 Roseville, CA 95747
 (916) 789-0822 (916) 789-0824 (Fax)
 www.sgicompanies.com